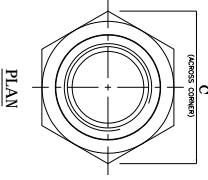
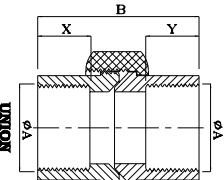


STOPPING PLUG

STOPPING PLUG DESCRIPTION TABLE :

CAT. No.	NIPPLE SIZES	A	ØB	THREAD PITCH
SP/2010-1	M16 METRIC THREADS	20mm	25mm	1.50mm PITCH
SP/2010-2	M20 METRIC THREADS	20mm	25mm	1.50mm PITCH
SP/2010-3	M25 METRIC THREADS	22mm	27mm	1.50mm PITCH
SP/2010-4	M33 METRIC THREADS	23mm	28mm	1.50mm PITCH
SP/2010-5	M40 METRIC THREADS	23mm	28mm	1.50mm PITCH
SP/2010-6	M50 METRIC THREADS	24mm	29mm	1.50mm PITCH
SP/2010-7	M62 METRIC THREADS	25mm	30mm	1.50mm PITCH
SP/2010-7	M76 METRIC THREADS	25mm	30mm	1.50mm PITCH

OPTIONS : THE TYPE OF THREADS MAY BE NPT/BSC/ET/PG OF EQUIVALENT SIZE

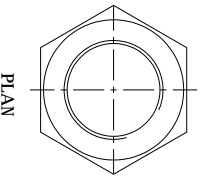
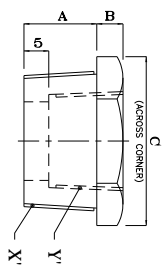


UNION

UNION DESCRIPTION TABLE :

CAT. No.	CABLE ENTRY SIZES (A)	B	C (cross corner)	X	Y	THREAD PITCH
UN/2010-1	M16 (F/M) x M16 (F/M)	47mm	47mm	15mm	15mm	1.50mm PITCH
UN/2010-2	M20 (F/M) x M20 (F/M)	47mm	47mm	15mm	15mm	1.50mm PITCH
UN/2010-3	M25 (F/M) x M25 (F/M)	47mm	52mm	15mm	15mm	1.50mm PITCH
UN/2010-4	M33 (F/M) x M33 (F/M)	50mm	58mm	15mm	15mm	1.50mm PITCH
UN/2010-5	M40 (F/M) x M40 (F/M)	55mm	72mm	16mm	16mm	1.50mm PITCH
UN/2010-6	M50 (F/M) x M50 (F/M)	55mm	83mm	16mm	16mm	1.50mm PITCH
UN/2010-7	M62 (F/M) x M62 (F/M)	58mm	110mm	17mm	17mm	1.50mm PITCH
UN/2010-8	M76 (F/M) x M76 (F/M)	58mm	115mm	17mm	17mm	1.50mm PITCH

OPTIONS : THE TYPE OF THREADS MAY BE NPT/BSC/ET/PG OF EQUIVALENT SIZE

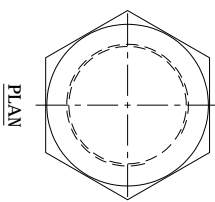
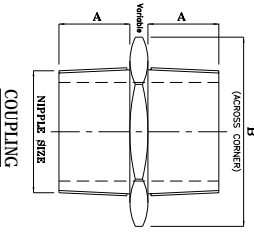


REDUCER

REDUCER DESCRIPTION TABLE :

CAT. No.	NIPPLE SIZES	A	B	C (cross corner)	X	Y	THREAD PITCH
R2/2010-1	M20 x M16	20mm	5mm	29mm	M20	M16	1.50mm PITCH
R2/2010-2	M25 x M20	20mm	5mm	32mm	M25	M20	1.50mm PITCH
R2/2010-3	M33 x M25	22mm	7mm	42mm	M33	M25	1.50mm PITCH
R2/2010-4	M40 x M33	24mm	7mm	52mm	M40	M33	1.50mm PITCH
R2/2010-5	M50 x M40	25mm	9mm	59mm	M50	M40	1.50mm PITCH
R2/2010-6	M62 x M50	25mm	9mm	61mm	M62	M50	1.50mm PITCH
R2/2010-7	M76 x M62	25mm	9mm	67mm	M76	M62	1.50mm PITCH

REDUCER MADE x FEMALE SIZE SUITABLE COMBINATION OF ABOVE NIPPLE
 OPTIONS : THE TYPE OF THREADS MAY BE NPT/BSC/ET/PG OF EQUIVALENT SIZE



COUPLING

COUPLING (MALE x MALE) DESCRIPTION TABLE :

CAT. No.	NIPPLE SIZES	A	B (cross corner)	THREAD PITCH
CUP/2010-1	M16(M) x M16(M) - METRIC THREADS	18mm	25mm	1.50mm PITCH
CUP/2010-2	M20(M) x M20(M) - METRIC THREADS	20mm	29mm	1.50mm PITCH
CUP/2010-3	M25(M) x M25(M) - METRIC THREADS	22mm	37mm	1.50mm PITCH
CUP/2010-4	M33(M) x M33(M) - METRIC THREADS	23mm	47mm	1.50mm PITCH
CUP/2010-5	M40(M) x M40(M) - METRIC THREADS	23mm	52mm	1.50mm PITCH
CUP/2010-6	M50(M) x M50(M) - METRIC THREADS	24mm	64mm	1.50mm PITCH
CUP/2010-7	M62(M) x M62(M) - METRIC THREADS	25mm	81mm	1.50mm PITCH
CUP/2010-8	M76(M) x M76(M) - METRIC THREADS	26mm	92mm	1.50mm PITCH

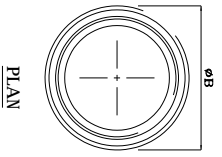
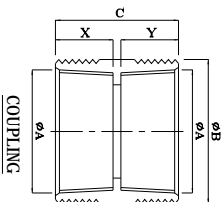
OPTIONS : THE TYPE OF THREADS MAY BE NPT/BSC/ET/PG OF EQUIVALENT SIZE

Reference IS/IEC Standard as follows :

- 1 - FLAMERPROOF (Ex d) PROTECTION - IIA/IB & IIC, IS/IEC 60079-1 (2014)
- 2 - INGRESS (IP) PROTECTION - IP-66, IS/IEC 60529 (2001). (Redfirmed 2014)

Standard Specification :

- 1 - MATERIAL OF CONSTRUCTION - CAST ALUMINIUM / STAINLESS STEEL / M.S. / BRASS NICKEL PLATED
- 2 - NIPPLE SIZE DETAIL AS PER CLIENTS REQUIREMENT
- 3 - GASKET - NEOPRENE RUBBER GASKET

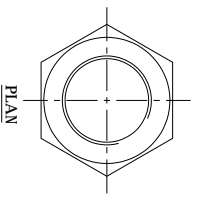
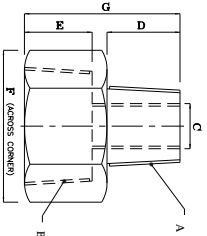


COUPLING

COUPLING DESCRIPTION TABLE :

CAT. No.	CABLE ENTRY SIZES (A)	ØB	C	X	Y	THREAD PITCH
CUP/2010-1	M16(F/M) x M16(F/M) - METRIC THREADS	22mm	60mm	22mm	22mm	1.50mm PITCH
CUP/2010-2	M20(F/M) x M20(F/M) - METRIC THREADS	25mm	60mm	22mm	22mm	1.50mm PITCH
CUP/2010-3	M25(F/M) x M25(F/M) - METRIC THREADS	28mm	60mm	22mm	22mm	1.50mm PITCH
CUP/2010-4	M33(F/M) x M33(F/M) - METRIC THREADS	41mm	66mm	25mm	25mm	1.50mm PITCH
CUP/2010-5	M40(F/M) x M40(F/M) - METRIC THREADS	51mm	66mm	25mm	25mm	1.50mm PITCH
CUP/2010-6	M50(F/M) x M50(F/M) - METRIC THREADS	55mm	69mm	24mm	24mm	1.50mm PITCH
CUP/2010-7	M62(F/M) x M62(F/M) - METRIC THREADS	70mm	69mm	24mm	24mm	1.50mm PITCH
CUP/2010-8	M76(F/M) x M76(F/M) - METRIC THREADS	80mm	68mm	24mm	24mm	1.50mm PITCH

OPTIONS : THE TYPE OF THREADS MAY BE NPT/BSC/ET/PG OF EQUIVALENT SIZE



ADAPTOR

ADAPTOR DESCRIPTION TABLE :

CAT. No.	NIPPLE SIZES (M x F)	A	B	C	D	E	F (cross corner)	G	THREAD PITCH
AD/2010-1	M16 x M20 - METRIC THREADS	M16	M20	M16	20mm	25mm	25mm	50mm	1.50mm PITCH
AD/2010-2	M20 x M25 - METRIC THREADS	M20	M25	M20	22mm	25mm	32mm	52mm	1.50mm PITCH
AD/2010-3	M25 x M33 - METRIC THREADS	M25	M33	M25	23mm	25mm	41mm	53mm	1.50mm PITCH
AD/2010-4	M33 x M40 - METRIC THREADS	M33	M40	M32	23mm	25mm	52mm	53mm	1.50mm PITCH
AD/2010-5	M40 x M50 - METRIC THREADS	M40	M50	M38	24mm	25mm	59mm	54mm	1.50mm PITCH
AD/2010-6	M50 x M62 - METRIC THREADS	M50	M62	M50	25mm	25mm	61mm	55mm	1.50mm PITCH
AD/2010-7	M62 x M76 - METRIC THREADS	M62	M76	M62	25mm	25mm	67mm	56mm	1.50mm PITCH

ADAPTOR MADE x FEMALE SIZE SUITABLE COMBINATION OF ABOVE NIPPLE
 OPTIONS : THE TYPE OF THREADS MAY BE NPT/BSC/ET/PG OF EQUIVALENT SIZE

NOTE :

- COMPONENT LAYOUT IS TENTATIVE RELOCATION OF PARTS & COMPONENTS IS POSSIBLE AT THE TIME OF ACTUAL MANUFACTURING.
- OVERALL DIMENSIONS ARE ±2mm

REV.	DATE	DESCRIPTION	DRN.	CHD.	APPO.
Δ
Δ
Δ

CAT. No.	ACC/20/2019
MODEL No.:	ACC/2019-1
TITLE :	FLAMERPROOF-WEATHERPROOF ACCESSORIES
CHKD.	JASRAJ
APPD.	
SHEET	1 OF 1
DRN.	N. T. S.
SCALE	REV.-0
QMR. CERT. No.	
IN/CI/MFR/T/22/R/3783	
Di. 22/03/2022	
PSO No. :	PS46041/1
BIS LICENCE No. :	CM/L-0002914461